






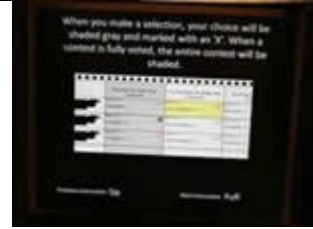
# Using the Sip-N-Puff

Using the Sip-N-Puff	
The Sip-N-Puff device is used to assist voters with physical impairments.	
If requested, an Inspector will assist you using the Sip-N-Puff device.	
There are two types of Sip-n-Puff devices, the Headset device	
or the Gooseneck device.	
The Inspector assembles the unit with disposable gloves for your health and safety.	
Disposable straws are also used for sanitary purposes to protect you.	
The gooseneck device is mounted to the ImageCast BMD or table. The Inspector adjusts the gooseneck tube.  The Inspector attaches a clean straw to the end of the tube.  And places the straw into your mouth. Then, sip or puff to activate the enabling device.  The device is activated as long as the sip or puff is sustained. Once you cease sipping or puffing, the device goes off.	
Once the Sip-N-Puff device is selected, a welcome screen displays, confirming your choice.	
The system gives instructions, in both visual and audio formats, on how to use the Sip-N-Puff device.	

The voting session is now ready for you to begin marking your ballot.



The system directs you through the process of creating and marking your ballot.



When you are satisfied with all selections, a paper ballot is printed and deposited into a privacy sleeve.



Once printed, you may review the ballot through the scanner for verification.



At the conclusion of the voting session, the Inspector carefully removes and disposes the straw.